



Caledonian Maritime Assets Ltd  
Municipal Buildings  
Fore St  
Port Glasgow PA14 5EQ

Tel: 01475 749920  
Fax: 01475 745109

Edward Mountain  
Convenor  
Net Zero, Energy & Transport Committee  
Scottish Parliament  
EH99 1SO

30 September 2025

Dear Mr Mountain,

**Update on New Vessels for Islay & Little Minch. MV Isle of Islay (NB1092), MV Loch Indaal (NB1093), MV Lochmor (NB1100) and MV Claymore (NB1101)**

In our 01 September 2025 interim update to the Committee, we advised that the Acceptance Sea Trials for MV Isle of Islay were anticipated to be carried out in September, we can report that the Sea Trials have been successfully completed.

The RoRo gear (stern and bow doors plus the mezzanine decks) have been commissioned and will be load tested in the coming week, the lifts are close to completion. Full finalisation of the vessel and compliance checks will be carried out throughout October, we anticipate if these activities go smoothly, the vessel will be delivered in November (as early as possible but with all necessary Flag State and Classification approvals) and with regard to MV Loch Indaal, MV Lochmor and MV Claymore, these vessels to follow a delivery schedule at six-month intervals from the delivery of MV Isle of Islay.

Following delivery of MV Isle of Islay, the vessel will commence the repositioning voyage from the Sea of Marmara back to Scottish Waters – this aspect being some 2 weeks including a refuelling stop in Gibraltar prior to executing the final leg into the Atlantic and across the Bay of Biscay. Upon arrival there will be a period of familiarisation and testing of the vessel at the ports in which it will operate.

MV Isle of Islay

The Sea Trials were completed with staff from CMAL and CalMac in attendance. This week the Marine Evacuation System (MES) will be deployed by the ship's crew. MCA are arranged to attend to witness the deployment of the MES by the crew. Further compliance and safety by MCA are arranged throughout October for surveys and certification.

### MV Loch Indaal

MV Loch Indaal is berthed at the quay at the shipyard. General outfit work is ongoing throughout the vessel. Commissioning has commenced; the Main Engines have been run and load tested, Bow Thrusters set to work, pre-commissioning checks of the Main Propulsors is underway. Commissioning of Bridge Navigation and Communication Equipment is underway. Work on the manufacture and installation of the RoRo equipment is progressing.

### MV Lochmor

MV Lochmor is berthed at the quay at the shipyard having been launched on 23<sup>rd</sup> August 2025. Outfit outwork is ongoing, installation of equipment, cables, pipework, ventilation and insulation is ongoing throughout the vessel. Work on the manufacture of the RoRo equipment is progressing.

### NB 1101 (MV Claymore)

NB1101 is on the slipway at the shipyard, the main hull structure is complete. Outfit outwork is ongoing, installation of equipment, cables, pipework, ventilation and insulation is progressing throughout the vessel. Work on the manufacture of the RoRo equipment is progressing.

The shipyard is reviewing their plans for the launch date for the vessel, but this will be post-delivery of the MV Isle of Islay.

### Port Enabling Works

Snagging and minor additional works at Kennacraig were completed in September.

Full commissioning, testing & operator training for the mooring aid winches at Port Askaig will be undertaken during MV Isle of Islay familiarisation trials prior to handover to Argyll & Bute Council (Port owner).

Design of the shore power systems for both Pt Askaig and Kennacraig is ongoing. Electricity network upgrades by the Distribution Network Operator (SSEN) to both sites are anticipated Summer 2026.

### Overall

The overall costs of delivering the four vessels, including CMAL and CalMac costs, remain on track, including risk allowance of around 3%, advised in our 19 December 2024 update.

We continue to work closely with Transport Scotland and CalMac to consider the service implications of the extended delivery dates and plan accordingly for revised entry in to service



Caledonian Maritime Assets Ltd  
Municipal Buildings  
Fore St  
Port Glasgow PA14 5EQ

Tel: 01475 749920  
Fax: 01475 745109

dates. As previously advised, we do not envisage the delivery of the MV Isle of Islay and future vessels having a significant impact on the deployment and cascade plan.

Yours sincerely

Kevin Hobbs  
Chief Executive Officer

for and on behalf of  
Caledonian Maritime Assets Limited

Please see photographs appendix below.

## Photographs

### MV Isle of Islay (NB 1092)

Isle of Islay at the Quayside



View from Isle of Islay Departing for Sea Trials





## MV Isle of Islay (NB1092)

Servery



Passenger Lounge Deck 5





## MV Isle of Islay (NB1092)

Deck 6 Passenger Lounge Looking Fwd



Deck 6 Passenger Lounge Fwd Area looking to Port





## MV Loch Indaal (NB 1093)

Loch Indaal at the Quayside (Isle of Islay & Lochmor in the background)



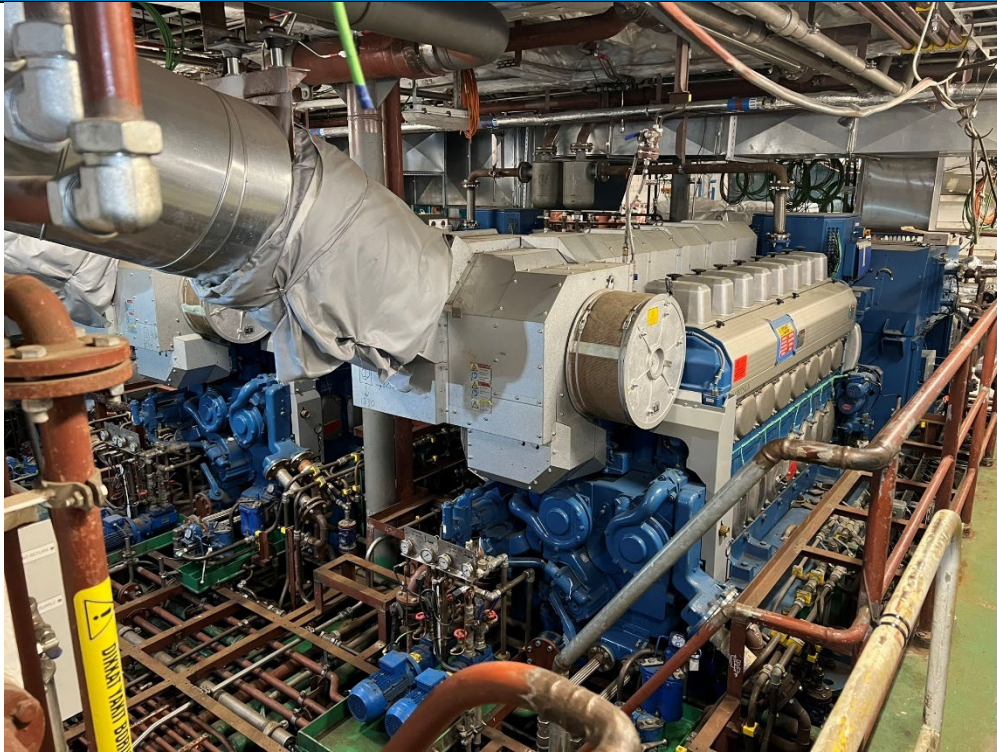
Loch Indaal at the Quayside (NB1101 in the background)





## MV Loch Indaal (NB 1093)

Engine Room



Engine Control Room





## MV Lochmor (NB 1100)

Lochmor – At the Quay



Engine Control Room





## NB 1101 (Claymore)

NB1101 on the Slipway



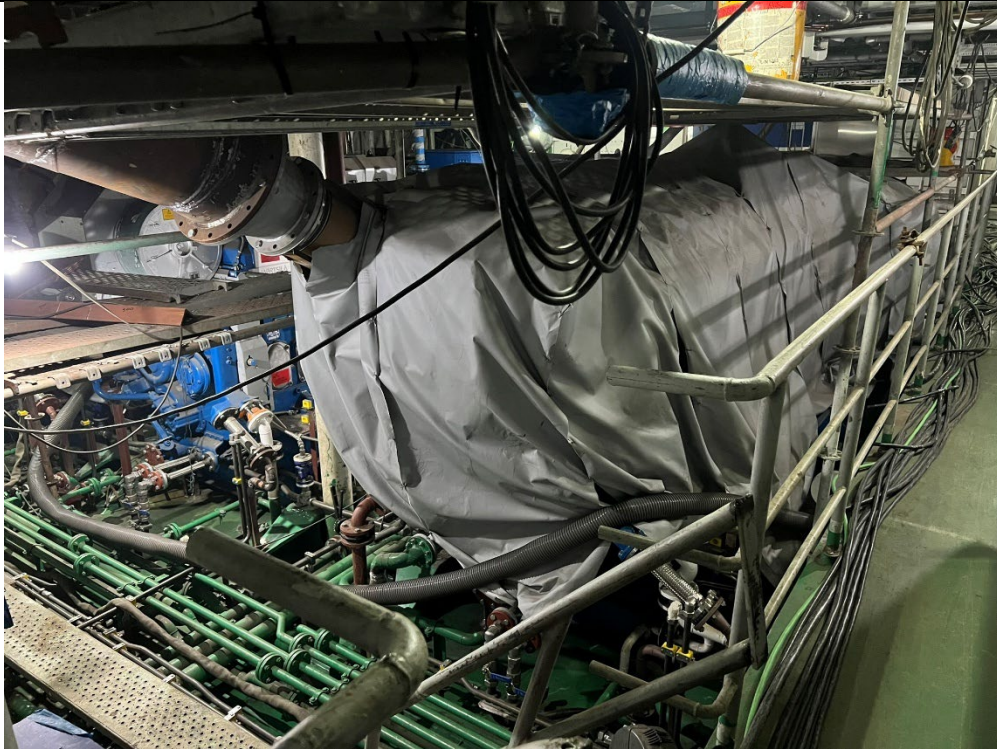
NB1101 on the Slipway





## NB 1101 (Claymore)

Engine Room



Cooling Water Room





## Port Enabling Works

